

Jednościenne przewody kominowe typu **SPU**

PRZEZNACZENIE:

stosowany jako wkład do istniejących szachtów w celu odprowadzenia spalin z urządzeń grzewczych opalanych gazem lub olejem opałowym o maksymalnej temperaturze spalin 600°C

BUDOWA RUR I KSZTAŁTEK:

elementy jednościenne,

ZAKRES ŚREDNIC:

80÷500 mm

PALIWO:

gaz lub olej opałowy

GATUNEK I GRUBOŚĆ MATERIAŁU:

stal nierdzewna 1.4301 o grubości 0,5÷0,8 mm

ODPORNOŚĆ NA KOROZJĘ:

Vm/V2/V3

ODPORNOŚĆ NA POŻAR SADZY:

Odporny

ODLEGŁOŚĆ OD MATERIAŁÓW PALNYCH:

250 mm

KLASA TEMPERATURY:

T 600 - 600 °C

SPOSÓB PRACY KOMINA:

podciśnieniowy

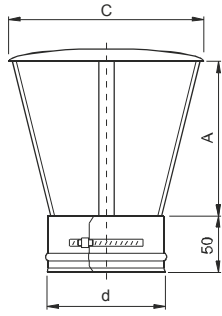
ODPORNOŚĆ NA DZIAŁANIE KONDENSATU:

D

PARASOL

101

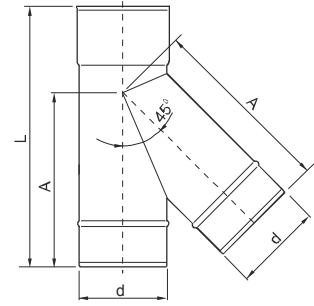
| d | A | C | INDEX |
|-----|-----|-------|-----------|
| 80 | 130 | 180 | 101080000 |
| 100 | 130 | 180 | 101100000 |
| 113 | 130 | 180 | 101110000 |
| 120 | 130 | 180 | 101120000 |
| 130 | 130 | 180 | 101130000 |
| 140 | 130 | 250 | 101140000 |
| 150 | 130 | 250 | 101150000 |
| 160 | 190 | 250 | 101160000 |
| 180 | 190 | 300 | 101180000 |
| 200 | 190 | d+100 | 101200000 |
| 225 | 190 | d+100 | 101220000 |
| 250 | 190 | d+100 | 101250000 |
| 300 | 230 | d+100 | 101300000 |
| 350 | 230 | d+100 | 101350000 |
| 400 | 230 | d+100 | 101400000 |
| 450 | 230 | d+100 | 101450000 |
| 500 | 230 | d+100 | 101500000 |



TRÓJNIK 45

109

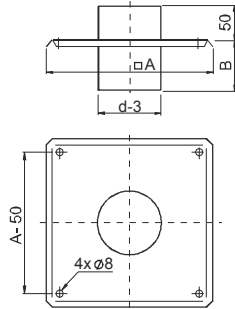
| d | A | L | INDEX |
|-----|-----|------|-----------|
| 80 | 165 | 250 | 109080000 |
| 100 | 215 | 333 | 109100000 |
| 113 | 225 | 333 | 109110000 |
| 120 | 225 | 333 | 109120000 |
| 130 | 245 | 360 | 109130000 |
| 140 | 260 | 380 | 109140000 |
| 150 | 270 | 400 | 109150000 |
| 160 | 280 | 400 | 109160000 |
| 180 | 310 | 430 | 109180000 |
| 200 | 350 | 497 | 109200000 |
| 225 | 400 | 560 | 109220000 |
| 250 | 410 | 560 | 109250000 |
| 300 | 500 | 690 | 109300000 |
| 350 | 540 | 730 | 109350000 |
| 400 | 620 | 900 | 109400000 |
| 450 | 700 | 900 | 109450000 |
| 500 | 780 | 1000 | 109500000 |



PLYTA DACHOWA

102

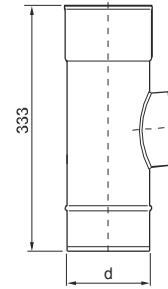
| d | A | B | INDEX |
|-----|-----|-----|-----------|
| 80 | 320 | 93 | 102080000 |
| 100 | 320 | 93 | 102100000 |
| 113 | 320 | 93 | 102110000 |
| 120 | 320 | 93 | 102120000 |
| 130 | 320 | 93 | 102130000 |
| 140 | 320 | 93 | 102140000 |
| 150 | 330 | 93 | 102150000 |
| 160 | 330 | 150 | 102160000 |
| 180 | 400 | 150 | 102180000 |
| 200 | 400 | 150 | 102200000 |
| 225 | 400 | 150 | 102220000 |
| 250 | 450 | 150 | 102250000 |
| 300 | 500 | 150 | 102300000 |
| 350 | 550 | 150 | 102350000 |
| 400 | 600 | 150 | 102400000 |
| 450 | 650 | 150 | 102450000 |
| 500 | 700 | 150 | 102500000 |



TRÓJNIK POD REG. CIĄGU

110

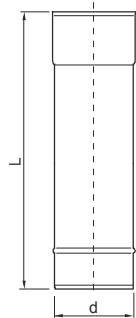
| d | INDEX |
|-----|-----------|
| 150 | 110150000 |
| 160 | 110160000 |
| 180 | 110180000 |
| 200 | 110200000 |
| 225 | 110220000 |
| 250 | 110250000 |
| 300 | 110300000 |
| 350 | 110350000 |
| 400 | 110400000 |
| 450 | 110450000 |
| 500 | 110500000 |



RURA

103, 104, 105, 106

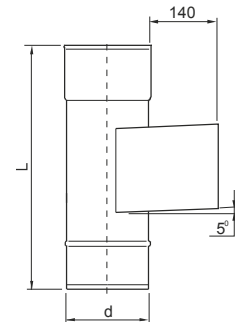
| d | INDEX | | | |
|-----|-----------|-----------|-----------|-----------|
| | L 1000 | L 500 | L 330 | L 250 I |
| 80 | 103080000 | 104080000 | 105080000 | 106080000 |
| 100 | 103100000 | 104100000 | 105100000 | 106100000 |
| 113 | 103110000 | 104110000 | 105110000 | 106110000 |
| 120 | 103120000 | 104120000 | 105120000 | 106120000 |
| 130 | 103130000 | 104130000 | 105130000 | 106130000 |
| 140 | 103140000 | 104140000 | 105140000 | 106140000 |
| 150 | 103150000 | 104150000 | 105150000 | 106150000 |
| 160 | 103160000 | 104160000 | 105160000 | 106160000 |
| 180 | 103180000 | 104180000 | 105180000 | 106180000 |
| 200 | 103200000 | 104200000 | 105200000 | 106200000 |
| 225 | 103220000 | 104220000 | 105220000 | 106220000 |
| 250 | 103250000 | 104250000 | 105250000 | 106250000 |
| 300 | 103300000 | 104300000 | 105300000 | 106300000 |
| 350 | 103350000 | 104350000 | 105350000 | 106350000 |
| 400 | 103400000 | 104400000 | 105400000 | 106400000 |
| 450 | 103450000 | 104450000 | 105450000 | 106450000 |
| 500 | 103500000 | 104500000 | 105500000 | 106500000 |



WYCZYSTKA

111

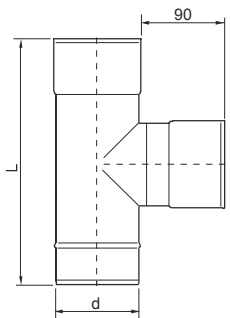
| d | L | INDEX |
|-----|-----|-----------|
| 80 | 333 | 111080000 |
| 100 | 333 | 111100000 |
| 113 | 333 | 111110000 |
| 120 | 333 | 111120000 |
| 130 | 333 | 111130000 |
| 140 | 333 | 111140000 |
| 150 | 333 | 111150000 |
| 160 | 400 | 111160000 |
| 180 | 400 | 111180000 |
| 200 | 400 | 111200000 |
| 225 | 400 | 111220000 |
| 250 | 400 | 111250000 |
| 300 | 500 | 111300000 |
| 350 | 500 | 111350000 |
| 400 | 500 | 111400000 |
| 450 | 500 | 111450000 |
| 500 | 500 | 111500000 |



TRÓJNIK 90°

107

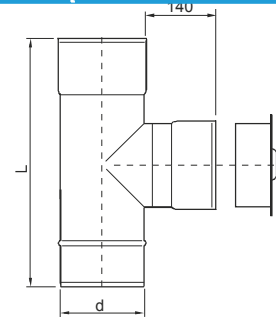
| d | L | INDEX |
|-----|-----|-----------|
| 80 | 250 | 107080000 |
| 100 | 250 | 107100000 |
| 113 | 333 | 107110000 |
| 120 | 333 | 107120000 |
| 130 | 333 | 107130000 |
| 140 | 333 | 107140000 |
| 150 | 333 | 107150000 |
| 160 | 400 | 107160000 |
| 180 | 400 | 107180000 |
| 200 | 400 | 107200000 |
| 225 | 450 | 107220000 |
| 250 | 450 | 107250000 |
| 300 | 500 | 107300000 |
| 350 | 550 | 107350000 |
| 400 | 600 | 107400000 |
| 450 | 650 | 107450000 |
| 500 | 700 | 107500000 |



WYCZYSTKA OKRĄGŁA

112

| d | L | INDEX |
|-----|-----|-----------|
| 80 | 250 | 112080000 |
| 100 | 250 | 112100000 |
| 113 | 250 | 112110000 |
| 120 | 250 | 112120000 |
| 130 | 333 | 112130000 |
| 140 | 333 | 112140000 |
| 150 | 333 | 112150000 |
| 160 | 400 | 112160000 |
| 180 | 400 | 112180000 |
| 200 | 400 | 112200000 |
| 225 | 400 | 112220000 |
| 250 | 400 | 112250000 |
| 300 | 500 | 112300000 |
| 350 | 500 | 112350000 |
| 400 | 500 | 112400000 |
| 450 | 500 | 112450000 |
| 500 | 500 | 112500000 |

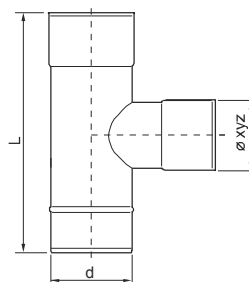


TRÓJNIK REDUKCYJNY

108

| d | L | xyz | INDEX |
|-----|-----|-----|-----------|
| 80 | 250 | | 108080xyz |
| 100 | 250 | | 108100xyz |
| 113 | 333 | | 108110xyz |
| 120 | 333 | | 108120xyz |
| 130 | 333 | | 108130xyz |
| 140 | 333 | | 108140xyz |
| 150 | 333 | | 108150xyz |
| 160 | 400 | | 108160xyz |
| 180 | 400 | | 108180xyz |
| 200 | 400 | | 108200xyz |
| 225 | 450 | | 108220xyz |
| 250 | 450 | | 108250xyz |
| 300 | 500 | | 108300xyz |
| 350 | 550 | | 108350xyz |
| 400 | 600 | | 108400xyz |
| 450 | 650 | | 108450xyz |
| 500 | 700 | | 108500xyz |

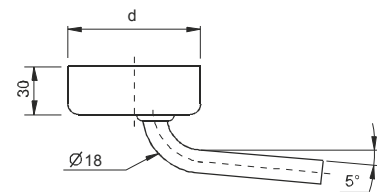
Zgodnie z zamawianiem



ODSKRAPLACZA

114

| d | INDEX |
|-----|-----------|
| 113 | 114110000 |
| 120 | 114120000 |
| 130 | 114130000 |

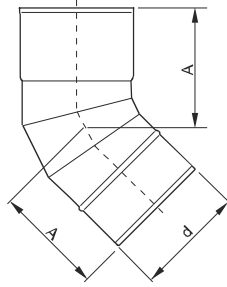


Przykład:
Trójnik redukcyjny 130/120, d=130, xyz=120, indeks: 108130120

KOLANO 45

115

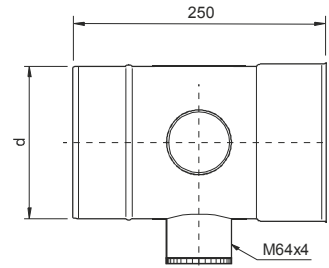
| | d | A | INDEX |
|---------|------|-----|-----------|
| Skręcne | 80 | 105 | 115080000 |
| | 100 | 110 | 115100000 |
| | 113 | 115 | 115110000 |
| | 120 | 115 | 115120000 |
| | 130 | 120 | 115130000 |
| | 140 | 120 | 115140000 |
| | 150 | 120 | 115150000 |
| | 160 | 125 | 115160000 |
| | 180 | 130 | 115180000 |
| | 200 | 140 | 115200000 |
| | 225 | 160 | 115220000 |
| | 250 | 165 | 115250000 |
| | 300 | 180 | 115300000 |
| | 350 | 190 | 115350000 |
| | 400 | 215 | 115400000 |
| | Stal | 450 | 225 |
| 500 | | 235 | 115500000 |



KRÓCIEC POMIAROWY 64

123

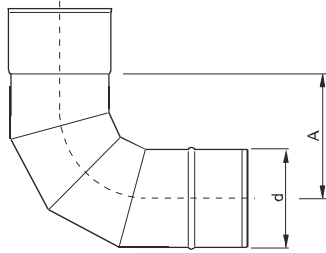
| d | INDEX |
|-----|-----------|
| 200 | 123200000 |
| 225 | 123220000 |
| 250 | 123250000 |
| 300 | 123300000 |
| 350 | 123350000 |
| 400 | 123400000 |
| 450 | 123450000 |
| 500 | 123500000 |



KOLANO 93°

116

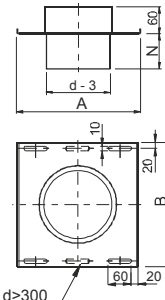
| | d | A | INDEX |
|---------|------|-----|-----------|
| Skręcne | 80 | 130 | 116080000 |
| | 100 | 140 | 116100000 |
| | 113 | 160 | 116110000 |
| | 120 | 160 | 116120000 |
| | 130 | 185 | 116130000 |
| | 140 | 185 | 116140000 |
| | 150 | 185 | 116150000 |
| | 160 | 185 | 116160000 |
| | 180 | 200 | 116180000 |
| | 200 | 200 | 116200000 |
| | 225 | 200 | 116220000 |
| | 250 | 235 | 116250000 |
| | 300 | 270 | 116300000 |
| | 350 | 320 | 116350000 |
| | 400 | 340 | 116400000 |
| | Stal | 450 | 390 |
| 500 | | 430 | 116500000 |



PODPORA PRZEJŚCIOWA

124

| d | A | B | N | INDEX |
|-----|-------|-------|-----|-----------|
| 80 | 230 | 250 | 140 | 124080000 |
| 100 | 230 | 250 | 140 | 124100000 |
| 113 | 230 | 250 | 140 | 124110000 |
| 120 | 230 | 250 | 140 | 124120000 |
| 130 | 230 | 250 | 140 | 124130000 |
| 140 | 230 | 250 | 140 | 124140000 |
| 150 | 230 | 250 | 140 | 124150000 |
| 160 | 230 | 250 | 190 | 124160000 |
| 180 | 300 | 300 | 190 | 124180000 |
| 200 | 300 | 300 | 190 | 124200000 |
| 225 | 300 | 300 | 190 | 124220000 |
| 250 | d+100 | d+100 | 190 | 124250000 |
| 300 | d+100 | d+100 | 190 | 124300000 |
| 350 | d+100 | d+100 | 190 | 124350000 |
| 400 | d+100 | d+100 | 190 | 124400000 |
| 450 | d+100 | d+100 | 190 | 124450000 |
| 500 | d+100 | d+100 | 190 | 124500000 |

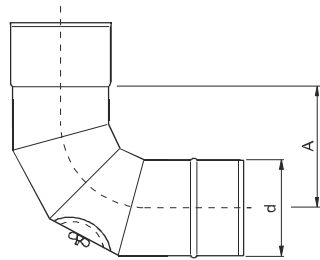


Dotychczasowy otwór dla d>300

KOLANO Z WYCZYTKĄ

118

| | d | A | INDEX |
|---------|------|-----|-----------|
| Skręcne | 80 | 145 | 118080000 |
| | 100 | 145 | 118100000 |
| | 113 | 170 | 118110000 |
| | 120 | 175 | 118120000 |
| | 130 | 180 | 118130000 |
| | 140 | 180 | 118140000 |
| | 150 | 180 | 118150000 |
| | 160 | 190 | 118160000 |
| | 180 | 200 | 118180000 |
| | 200 | 220 | 118200000 |
| | 225 | 220 | 118220000 |
| | 250 | 250 | 118250000 |
| | 300 | 285 | 118300000 |
| | 350 | 330 | 118350000 |
| | 400 | 355 | 118400000 |
| | Stal | 450 | 400 |
| 500 | | 440 | 118500000 |

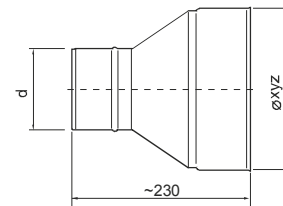


REDUKCJA

125

| d | xyz | INDEX |
|-----|-----------|-------|
| 80 | 125080xyz | |
| 100 | 125100xyz | |
| 113 | 125110xyz | |
| 120 | 125120xyz | |
| 130 | 125130xyz | |
| 140 | 125140xyz | |
| 150 | 125150xyz | |
| 160 | 125160xyz | |
| 180 | 125180xyz | |
| 200 | 125200xyz | |
| 225 | 125220xyz | |
| 250 | 125250xyz | |
| 300 | 125300xyz | |
| 350 | 125350xyz | |
| 400 | 125400xyz | |
| 450 | 125450xyz | |
| 500 | 125500xyz | |

UWAGA: Wykonujemy tylko, jeżeli nie można wykonać metoda rozciągania

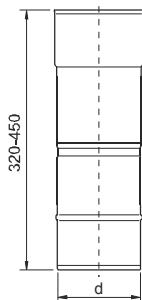


Przykład: Redukcja 113/120, d=113, xyz=120, index=125110120

TELESKOP

121

| d | INDEX |
|-----|-----------|
| 80 | 121080000 |
| 100 | 121100000 |
| 113 | 121110000 |
| 120 | 121120000 |
| 130 | 121130000 |
| 140 | 121140000 |
| 150 | 121150000 |
| 160 | 121160000 |
| 180 | 121180000 |
| 200 | 121200000 |
| 225 | 121220000 |
| 250 | 121250000 |
| 300 | 121300000 |
| 350 | 121350000 |
| 400 | 121400000 |
| 450 | 121450000 |
| 500 | 121500000 |

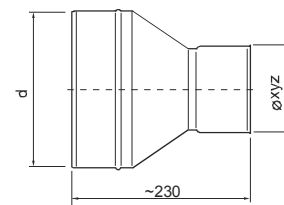


REDUKCJA ODWROTNA

126

| d | xyz | INDEX |
|-----|-----------|-------|
| 80 | 126080xyz | |
| 100 | 126100xyz | |
| 113 | 126110xyz | |
| 120 | 126120xyz | |
| 130 | 126130xyz | |
| 140 | 126140xyz | |
| 150 | 126150xyz | |
| 160 | 126160xyz | |
| 180 | 126180xyz | |
| 200 | 126200xyz | |
| 225 | 126220xyz | |
| 250 | 126250xyz | |
| 300 | 126300xyz | |
| 350 | 126350xyz | |
| 400 | 126400xyz | |
| 450 | 126450xyz | |
| 500 | 126500xyz | |

UWAGA: Wykonujemy tylko, jeżeli nie można wykonać metoda rozciągania

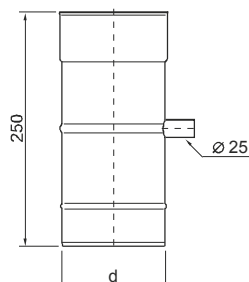


Przykład: Redukcja 120/113, d=120, xyz=113, index=126120113

KRÓCIEC POMIAROWY 25

122

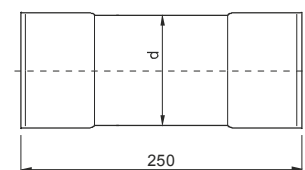
| d | INDEX |
|-----|-----------|
| 80 | 122080000 |
| 100 | 122100000 |
| 113 | 122110000 |
| 120 | 122120000 |
| 130 | 122130000 |
| 140 | 122140000 |
| 150 | 122150000 |
| 160 | 122160000 |
| 180 | 122180000 |
| 200 | 122200000 |
| 225 | 122220000 |
| 250 | 122250000 |
| 300 | 122300000 |
| 350 | 122350000 |
| 400 | 122400000 |
| 450 | 122450000 |
| 500 | 122500000 |



ZŁĄCZKA DWUKIELICHOWA

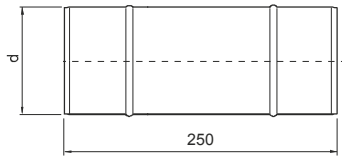
127

| d | INDEX |
|-----|-----------|
| 80 | 127080000 |
| 100 | 127100000 |
| 113 | 127110000 |
| 120 | 127120000 |
| 130 | 127130000 |
| 140 | 127140000 |
| 150 | 127150000 |
| 160 | 127160000 |
| 180 | 127180000 |
| 200 | 127200000 |
| 225 | 127220000 |
| 250 | 127250000 |
| 300 | 127300000 |
| 350 | 127350000 |
| 400 | 127400000 |
| 450 | 127450000 |
| 500 | 127500000 |



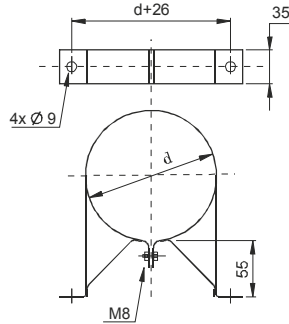
ZŁĄCZKA DWUNYFLOWA 128

| d | INDEX |
|-----|-----------|
| 80 | 128080000 |
| 100 | 128100000 |
| 113 | 128110000 |
| 120 | 128120000 |
| 130 | 128130000 |
| 140 | 128140000 |
| 150 | 128150000 |
| 160 | 128160000 |
| 180 | 128180000 |
| 200 | 128200000 |
| 225 | 128220000 |
| 250 | 128250000 |
| 300 | 128300000 |
| 350 | 128350000 |
| 400 | 128400000 |
| 450 | 128450000 |
| 500 | 128500000 |



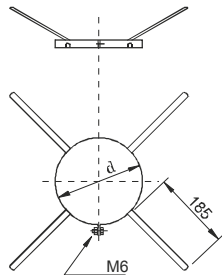
OBEJMA DO MURU 129

| d | INDEX |
|-----|-----------|
| 80 | 129080000 |
| 100 | 129100000 |
| 113 | 129110000 |
| 120 | 129120000 |
| 130 | 129130000 |
| 140 | 129140000 |
| 150 | 129150000 |
| 160 | 129160000 |
| 180 | 129180000 |



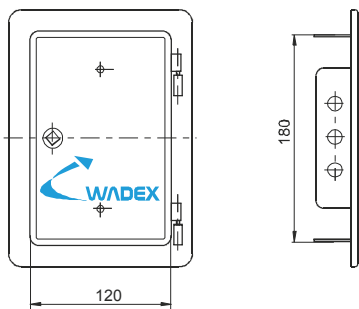
OBEJMA DYSTANSOWA 130

| d | INDEX |
|-----|-----------|
| 80 | 130080000 |
| 100 | 130100000 |
| 113 | 130110000 |
| 120 | 130120000 |
| 130 | 130130000 |
| 140 | 130140000 |
| 150 | 130150000 |
| 160 | 130160000 |
| 180 | 130180000 |
| 200 | 130200000 |
| 225 | 130220000 |
| 250 | 130250000 |
| 300 | 130300000 |
| 350 | 130350000 |
| 400 | 130400000 |
| 450 | 130450000 |
| 500 | 130500000 |



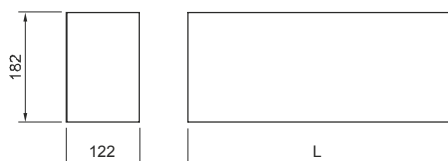
DRZWICZKI 131

| INDEX |
|-----------|
| 131010000 |



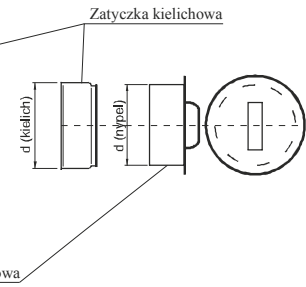
PRZEDŁUŻKA WYCZYSTKI 132

| L | INDEX |
|------|-----------|
| 250 | 132010000 |
| 500 | 132020000 |
| 1000 | 132030000 |



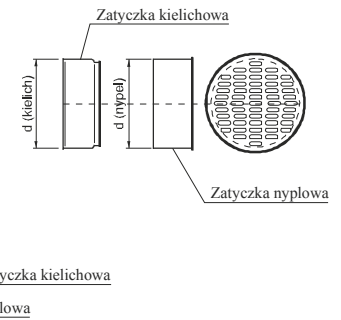
ZATYCZKA OKRĄGŁA 134

| d | INDEX | |
|-----|-----------|-----------|
| 80 | 134080000 | 134080300 |
| 100 | 134100000 | 134100300 |
| 113 | 134110000 | 134110300 |
| 120 | 134120000 | 134120300 |
| 130 | 134130000 | 134130300 |
| 140 | 134140000 | 134140300 |
| 150 | 134150000 | 134150300 |
| 160 | 134160000 | 134160300 |
| 180 | 134180000 | 134180300 |
| 200 | 134200000 | 134200300 |
| 225 | 134220000 | 134220300 |
| 250 | 134250000 | 134250300 |
| 300 | 134300000 | 134300300 |
| 350 | 134350000 | 134350300 |
| 400 | 134400000 | 134400300 |
| 450 | 134450000 | 134450300 |
| 500 | 134500000 | 134500300 |



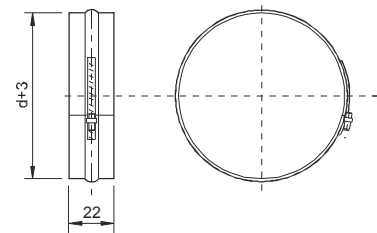
ZATYCZKA PERFOROWANA 134

| d | INDEX | |
|-----|-----------|-----------|
| 80 | 134080100 | 134080200 |
| 100 | 134100100 | 134100200 |
| 113 | 134110100 | 134110200 |
| 120 | 134120100 | 134120200 |
| 130 | 134130100 | 134130200 |
| 140 | 134140100 | 134140200 |
| 150 | 134150100 | 134150200 |
| 160 | 134160100 | 134160200 |
| 180 | 134180100 | 134180200 |
| 200 | 134200100 | 134200200 |
| 225 | 134220100 | 134220200 |
| 250 | 134250100 | 134250200 |
| 300 | 134300100 | 134300200 |
| 350 | 134350100 | 134350200 |



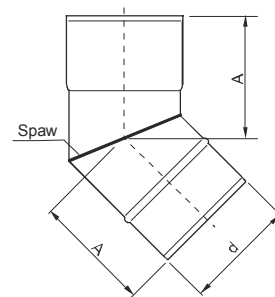
OBEJMA ZWYKŁA 136

| d | INDEX |
|-----|-----------|
| 80 | 136080000 |
| 100 | 136100000 |
| 113 | 136110000 |
| 120 | 136120000 |
| 130 | 136130000 |
| 140 | 136140000 |
| 150 | 136150000 |
| 160 | 136160000 |
| 180 | 136180000 |
| 200 | 136200000 |
| 225 | 136220000 |
| 250 | 136250000 |
| 300 | 136300000 |
| 350 | 136350000 |
| 400 | 136400000 |
| 450 | 136450000 |
| 500 | 136500000 |



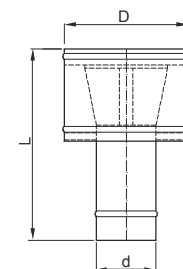
KOLANO 45 /spawane/ 138

| d | A | INDEX |
|-----|-----|-----------|
| 80 | 90 | 138080000 |
| 100 | 110 | 138100000 |
| 113 | 120 | 138110000 |
| 120 | 120 | 138120000 |
| 130 | 120 | 138130000 |
| 140 | 120 | 138140000 |
| 150 | 120 | 138150000 |
| 160 | 120 | 138160000 |
| 180 | 130 | 138180000 |
| 200 | 140 | 138200000 |
| 225 | 160 | 138220000 |
| 250 | 160 | 138250000 |
| 300 | 170 | 138300000 |
| 350 | 180 | 138350000 |



DEFLEKTOR 101

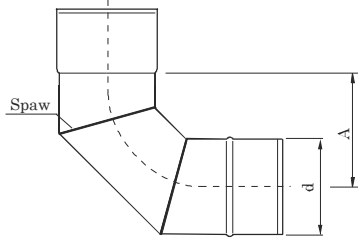
| d | D | L | INDEX |
|-----|-----|-----|-----------|
| 80 | 270 | 415 | 101080200 |
| 100 | 270 | 415 | 101100200 |
| 113 | 270 | 415 | 101110200 |
| 120 | 270 | 415 | 101120200 |
| 130 | 270 | 415 | 101130200 |
| 140 | 350 | 415 | 101140200 |
| 150 | 350 | 415 | 101150200 |
| 160 | 350 | 470 | 101160200 |
| 180 | 400 | 470 | 101180200 |
| 200 | 400 | 470 | 101200200 |
| 225 | 450 | 470 | 101220200 |
| 250 | 450 | 470 | 101250200 |
| 300 | 500 | 515 | 101300200 |
| 350 | 550 | 515 | 101350200 |
| 400 | 600 | 515 | 101400200 |
| 450 | 650 | 515 | 101450200 |
| 500 | 700 | 515 | 101500200 |



KOLANO 93° /spawane/

139

| d | A | INDEX |
|-----|-----|-----------|
| 80 | 115 | 139080000 |
| 100 | 115 | 139100000 |
| 113 | 115 | 139110000 |
| 120 | 135 | 139120000 |
| 130 | 135 | 139130000 |
| 140 | 135 | 139140000 |
| 150 | 150 | 139150000 |
| 160 | 155 | 139160000 |
| 180 | 165 | 139180000 |
| 200 | 180 | 139200000 |
| 225 | 180 | 139220000 |
| 250 | 210 | 139250000 |
| 300 | 235 | 139300000 |
| 350 | 270 | 139350000 |

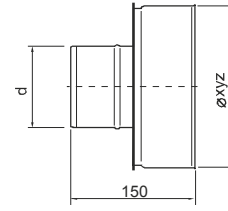


REDUKCJA SKOKOWA

144

| d | xyz | INDEX |
|-----|-----|-----------|
| 80 | | 144080xyz |
| 100 | | 144100xyz |
| 113 | | 144110xyz |
| 120 | | 144120xyz |
| 130 | | 144130xyz |
| 140 | | 144140xyz |
| 150 | | 144150xyz |
| 160 | | 144160xyz |
| 180 | | 144180xyz |
| 200 | | 144200xyz |
| 225 | | 144220xyz |
| 250 | | 144250xyz |

zgodnie z zamówieniem



Przykład:

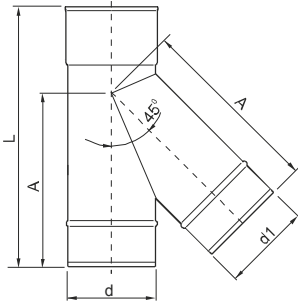
Redukcja 113/120, d=113, xyz=120, index=144110120

TRÓJNIK 45° redukcyjny

140

| d | d1 | A | L | INDEX |
|-----|-----|------|---|-----------|
| 80 | 207 | 250 | | 140080xyz |
| 100 | 215 | 333 | | 140100xyz |
| 113 | 225 | 333 | | 140110xyz |
| 120 | 225 | 333 | | 140120xyz |
| 130 | 245 | 360 | | 140130xyz |
| 140 | 260 | 380 | | 140140xyz |
| 150 | 270 | 400 | | 140150xyz |
| 160 | 280 | 400 | | 140160xyz |
| 180 | 310 | 430 | | 140180xyz |
| 200 | 350 | 497 | | 140200xyz |
| 225 | 400 | 560 | | 140220xyz |
| 250 | 410 | 560 | | 140250xyz |
| 300 | 500 | 690 | | 140300xyz |
| 350 | 540 | 730 | | 140350xyz |
| 400 | 620 | 900 | | 140400xyz |
| 450 | 700 | 900 | | 140450xyz |
| 500 | 780 | 1000 | | 140500xyz |

zgodnie z zamówieniem

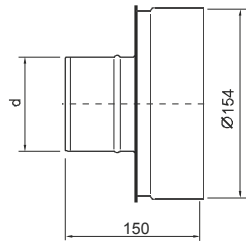


Przykład: Trójnik red. 45° 120/113, d=120, xyz=113, index=140120113

REDUKCJA OKRĄGŁA POD REGULATOR CIĄGU

141

| d | INDEX |
|-----|-----------|
| 80 | 141080000 |
| 100 | 141100000 |
| 113 | 141110000 |
| 120 | 141120000 |
| 130 | 141130000 |
| 140 | 141140000 |

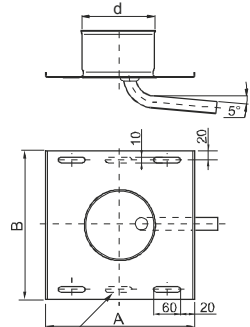


ODSKRAPLACZ Z PŁYTĄ

145

| d | A | B | INDEX |
|-----|-------|-------|-----------|
| 80 | 230 | 250 | 145080000 |
| 100 | 230 | 250 | 145100000 |
| 113 | 230 | 250 | 145110000 |
| 120 | 230 | 250 | 145120000 |
| 130 | 230 | 250 | 145130000 |
| 140 | 230 | 250 | 145140000 |
| 150 | 230 | 250 | 145150000 |
| 160 | 230 | 250 | 145160000 |
| 180 | 300 | 300 | 145180000 |
| 200 | 300 | 300 | 145200000 |
| 225 | 300 | 300 | 145220000 |
| 250 | d+100 | d+100 | 145250000 |
| 300 | d+100 | d+100 | 145300000 |
| 350 | d+100 | d+100 | 145350000 |
| 400 | d+100 | d+100 | 145400000 |
| 450 | d+100 | d+100 | 145450000 |
| 500 | d+100 | d+100 | 145500000 |

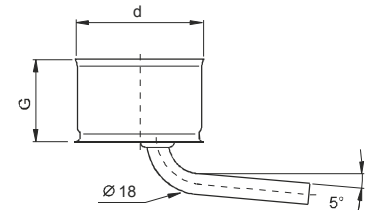
Dodatkowy otwór dla d>300



ODSKRAPLACZ B

147

| d | G | INDEX |
|-----|----|-----------|
| 80 | 70 | 147080000 |
| 100 | 70 | 147100000 |
| 140 | 70 | 147140000 |
| 150 | 70 | 147150000 |
| 160 | 80 | 147160000 |
| 180 | 80 | 147180000 |
| 200 | 80 | 147200000 |
| 225 | 80 | 147220000 |
| 250 | 80 | 147250000 |
| 300 | 80 | 147300000 |
| 350 | 80 | 147350000 |
| 400 | 80 | 147400000 |
| 450 | 80 | 147450000 |
| 500 | 80 | 147500000 |

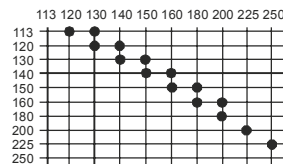
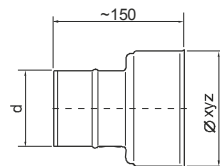


REDUKCJA ROZCIĄGANA

143

| d | xyz | INDEX |
|-----|-----|-----------|
| 100 | | 143100xyz |
| 113 | | 143110xyz |
| 120 | | 143120xyz |
| 130 | | 143130xyz |
| 140 | | 143140xyz |
| 150 | | 143150xyz |
| 160 | | 143160xyz |
| 180 | | 143180xyz |
| 200 | | 143200xyz |
| 225 | | 143220xyz |
| 250 | | 143250xyz |

zgodnie z zamówieniem



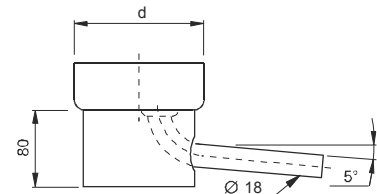
Przykład:

Redukcja 113/120, d=113, xyz=120, index=143110120

ODSKRAPLACZ "A" Z PODST.

150

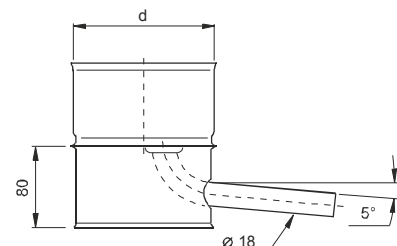
| d | INDEX |
|-----|-----------|
| 113 | 150110000 |
| 120 | 150120000 |
| 130 | 150130000 |



ODSKRAPLACZ "B" Z PODST.

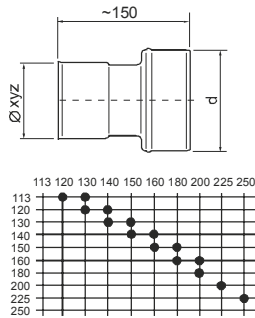
151

| d | INDEX |
|-----|-----------|
| 80 | 151080000 |
| 100 | 151100000 |
| 140 | 151140000 |
| 150 | 151150000 |
| 160 | 151160000 |
| 180 | 151180000 |
| 200 | 151200000 |
| 225 | 151220000 |
| 250 | 151250000 |
| 300 | 151300000 |
| 350 | 151350000 |
| 400 | 151400000 |
| 450 | 151450000 |
| 500 | 151500000 |



REDUKCJA ROZCIĄGANA ODWROTNA 153

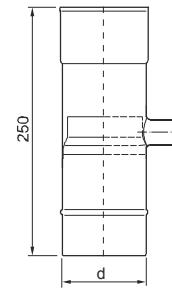
| d | xyz | INDEX |
|-----|-----|-----------|
| 100 | | 153100xyz |
| 113 | | 153110xyz |
| 120 | | 153120xyz |
| 130 | | 153130xyz |
| 140 | | 153140xyz |
| 150 | | 153150xyz |
| 160 | | 153160xyz |
| 180 | | 153180xyz |
| 200 | | 153200xyz |
| 225 | | 153220xyz |
| 250 | | 153250xyz |



Przykład:
Redukcja 120/113, d=120, xyz=113, index=153120110

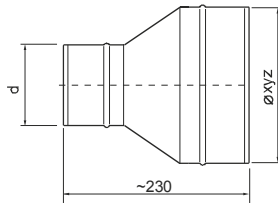
ODSKRAPLACZ PRZELOTOWY PIONOWY 160

| d | INDEX |
|-----|-----------|
| 80 | 160080000 |
| 100 | 160100000 |
| 113 | 160110000 |
| 120 | 160120000 |
| 130 | 160130000 |
| 140 | 160140000 |
| 150 | 160150000 |
| 160 | 160160000 |
| 180 | 160180000 |
| 200 | 160200000 |
| 225 | 160220000 |
| 250 | 160250000 |
| 300 | 160300000 |
| 350 | 160350000 |
| 400 | 160400000 |
| 450 | 160450000 |
| 500 | 160500000 |



REDUKCJA DWUNYPLOWA 158

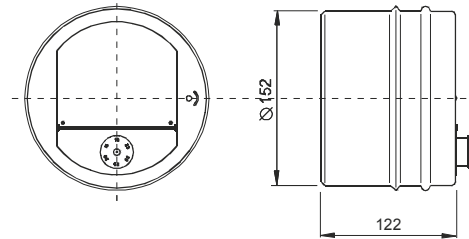
| d | xyz | INDEX |
|-----|-----|-----------|
| 80 | | 158080xyz |
| 100 | | 158100xyz |
| 113 | | 158110xyz |
| 120 | | 158120xyz |
| 130 | | 158130xyz |
| 140 | | 158140xyz |
| 150 | | 158150xyz |
| 160 | | 158160xyz |
| 180 | | 158180xyz |
| 200 | | 158200xyz |
| 225 | | 158220xyz |
| 250 | | 158250xyz |
| 300 | | 158300xyz |
| 350 | | 158350xyz |
| 400 | | 158400xyz |
| 450 | | 158450xyz |
| 500 | | 158500xyz |



Przykład: Redukcja 120N/130N, d=120, xyz=130, index=158120130

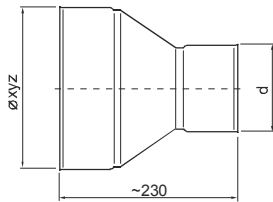
REGULATOR CIĄGU OKRĄGŁY 002

INDEX
002000001



REDUKCJA DWUKIELICHOWA 159

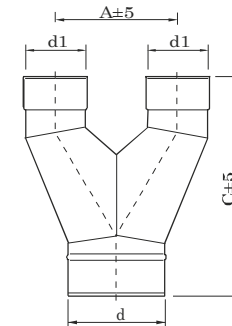
| d | xyz | INDEX |
|-----|-----|-----------|
| 80 | | 159080xyz |
| 100 | | 159100xyz |
| 113 | | 159110xyz |
| 120 | | 159120xyz |
| 130 | | 159130xyz |
| 140 | | 159140xyz |
| 150 | | 159150xyz |
| 160 | | 159160xyz |
| 180 | | 159180xyz |
| 200 | | 159200xyz |
| 225 | | 159220xyz |
| 250 | | 159250xyz |
| 300 | | 159300xyz |
| 350 | | 159350xyz |
| 400 | | 159400xyz |
| 450 | | 159450xyz |
| 500 | | 159500xyz |



Przykład: Redukcja 120K/130K, d=120, xyz=130, index=159120130

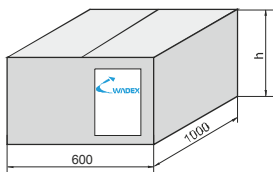
PORTKI KOMINOWE 999

| d | d1 | A | C | INDEX |
|-----|----|---|---|---------|
| 80 | | | | 999 ... |
| 100 | | | | |
| 113 | | | | |
| 120 | | | | |
| 130 | | | | |
| 140 | | | | |
| 150 | | | | |
| 160 | | | | |
| 180 | | | | |
| 200 | | | | |
| 225 | | | | |
| 250 | | | | |
| 300 | | | | |
| 350 | | | | |
| 400 | | | | |
| 450 | | | | |
| 500 | | | | |



PAKIET KSZTAŁTEK 120

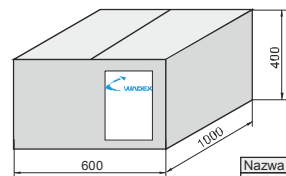
| d | h | INDEX |
|-----|-----|-----------|
| 113 | 330 | 120110000 |
| 120 | 330 | 120120000 |
| 130 | 330 | 120130000 |
| 140 | 330 | 120140000 |
| 150 | 330 | 120150000 |
| 160 | 330 | 120160000 |
| 180 | 500 | 120180000 |
| 200 | 500 | 120200000 |



| Nazwa | szk. | Nr |
|---------------|------|-------------|
| PARASOL | 1 | 101 |
| PLYTA DACHOWA | 1 | 102 |
| TROJNIK 90° | 1 | 107 |
| WYCZYSTKA | 1 | 111 |
| ODSKRAPLACZ | 1 | 114 lub 147 |
| DRZWICZKI | 1 | 131 |

PAKIET SPU 119

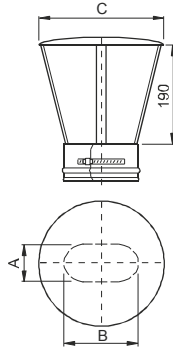
| d | INDEX |
|-----|-----------|
| 113 | 119110000 |
| 120 | 119120000 |
| 130 | 119130000 |
| 140 | 119140000 |
| 150 | 119150000 |



| Nazwa | szk. | Nr |
|---------------|------|-------------|
| PARASOL | 1 | 101 |
| PLYTA DACHOWA | 1 | 102 |
| RURA 1000 mm | 6 | 103 |
| RURA 500 mm | 1 | 104 |
| RURA 250 mm | 1 | 106 |
| TROJNIK 90° | 1 | 107 |
| WYCZYSTKA | 1 | 111 |
| ODSKRAPLACZ | 1 | 114 lub 147 |
| DRZWICZKI | 1 | 131 |

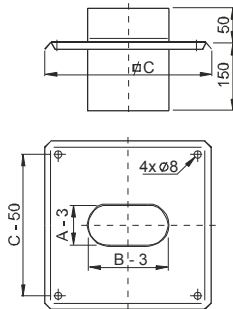
PARASOL owalny 101

| A | B | C | INDEX |
|-----|-----|-----|------------|
| 100 | 200 | 300 | 1011000006 |
| 120 | 180 | 300 | 1011800006 |
| 120 | 240 | 350 | 1011200006 |
| 140 | 250 | 350 | 1011400006 |



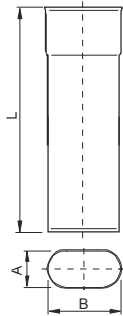
PŁYTA DACHOWA owalna 102

| A | B | C | INDEX |
|-----|-----|-----|------------|
| 100 | 200 | 400 | 1021000006 |
| 120 | 180 | 400 | 1021800006 |
| 120 | 240 | 450 | 1021200006 |
| 140 | 250 | 450 | 1021400006 |



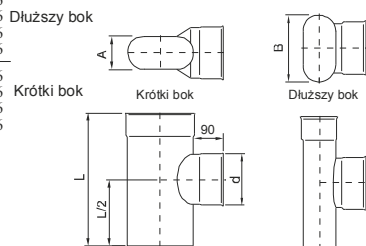
RURA owalna 103, 104, 106

| INDEX | | | | | |
|-------|-----|------------|------------|------------|----------|
| A | B | L 1000 | L 500 | L 250 I | L 250 II |
| 100 | 200 | 1031000006 | 1041000006 | 1061000006 | |
| 120 | 180 | 1031800006 | 1041800006 | 1061800006 | |
| 120 | 240 | 1031200006 | 1041200006 | 1061200006 | |
| 140 | 250 | 1031400006 | 1041400006 | 1061400006 | |



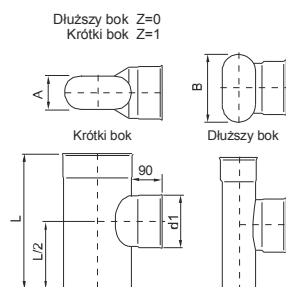
TRÓJNIK 90° owalny 107

| A | B | d | L | INDEX |
|-----|-----|-----|-----|------------|
| 100 | 200 | 150 | 333 | 1071000006 |
| 120 | 180 | 150 | 333 | 1071800006 |
| 120 | 240 | 180 | 400 | 1071200006 |
| 140 | 250 | 200 | 400 | 1071400006 |



TRÓJNIK 90° redukcyjny owalny 108

| A | B | d1 | L | INDEX |
|-----|-----|-----|-----|------------|
| 100 | 200 | 130 | 333 | 10810013Z6 |
| 100 | 200 | 160 | 400 | 10810016Z6 |
| 100 | 200 | 180 | 400 | 10810018Z6 |
| 100 | 200 | 200 | 400 | 10810020Z6 |
| 120 | 180 | 130 | 333 | 10818013Z6 |
| 120 | 180 | 160 | 400 | 10818016Z6 |
| 120 | 180 | 180 | 400 | 10818018Z6 |
| 120 | 180 | 200 | 400 | 10818020Z6 |
| 120 | 240 | 150 | 333 | 10812015Z6 |
| 120 | 240 | 160 | 400 | 10812016Z6 |
| 120 | 240 | 200 | 400 | 10812020Z6 |

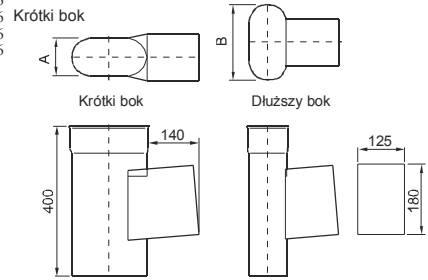


ELEMENT NIETYPOWY

Elementy niekatalogowe wykonywane są na podstawie rysunków dostarczonych przez klienta. Wycena takich elementów jest oparta na indywidualnej kalkulacji.

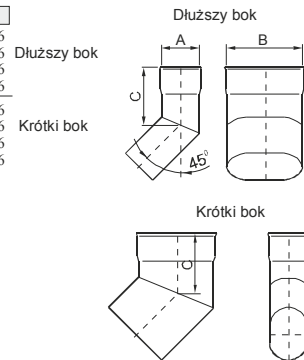
WYCZYSTKA owalna 111

| A | B | INDEX |
|-----|-----|------------|
| 100 | 200 | 1111000006 |
| 120 | 180 | 1111800006 |
| 120 | 240 | 1111200006 |
| 140 | 250 | 1111400006 |



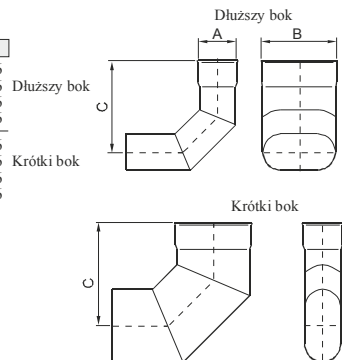
KOLANO 45° owalne 115

| A | B | C | INDEX |
|-----|-----|-----|------------|
| 100 | 200 | 180 | 1151000006 |
| 120 | 180 | 180 | 1151800006 |
| 120 | 240 | 180 | 1151200006 |
| 140 | 250 | 190 | 1151400006 |



KOLANO 93° owalne 117

| A | B | C | INDEX |
|-----|-----|-----|------------|
| 100 | 200 | 174 | 1171000006 |
| 120 | 180 | 174 | 1171800006 |
| 120 | 240 | 172 | 1171200006 |
| 140 | 250 | 182 | 1171400006 |



ODSKRAPLACZ owalny 147

| A | B | INDEX |
|-----|-----|------------|
| 100 | 200 | 1471000006 |
| 120 | 180 | 1471800006 |
| 120 | 240 | 1471200006 |
| 140 | 250 | 1471400006 |

